

A-a A-b

A-a A-b

A-a A-b

A-a A-b

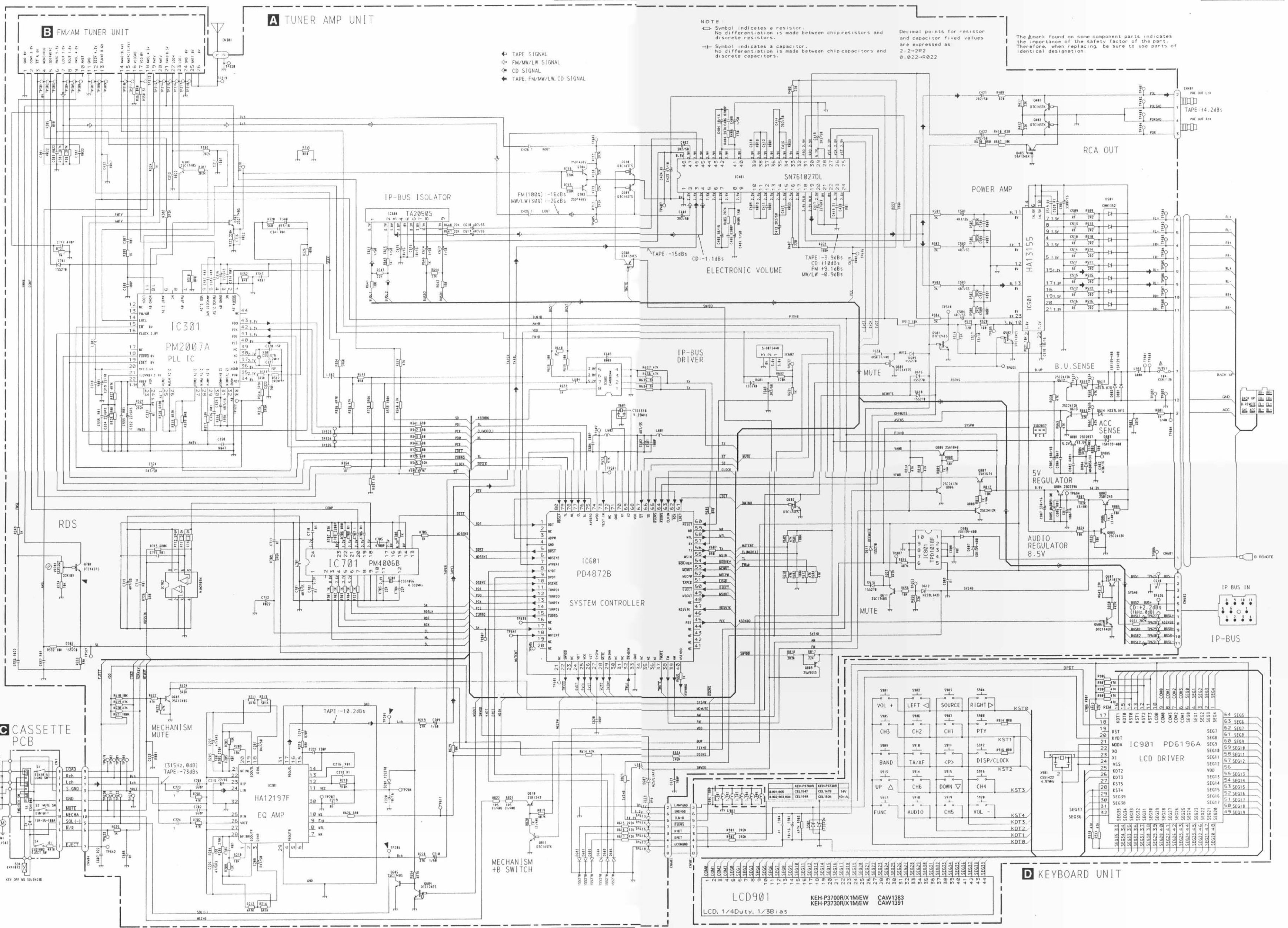
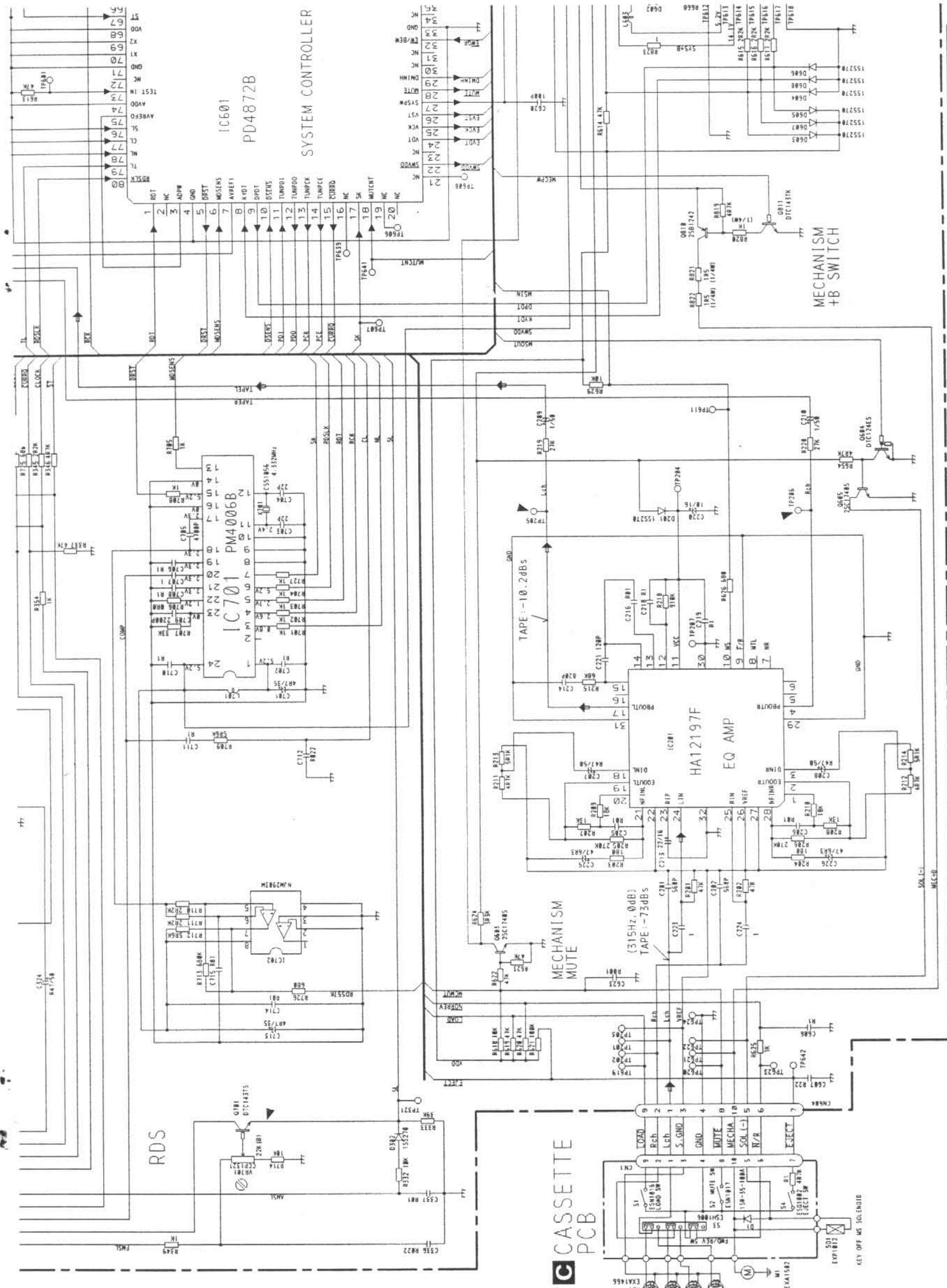


Fig. 5



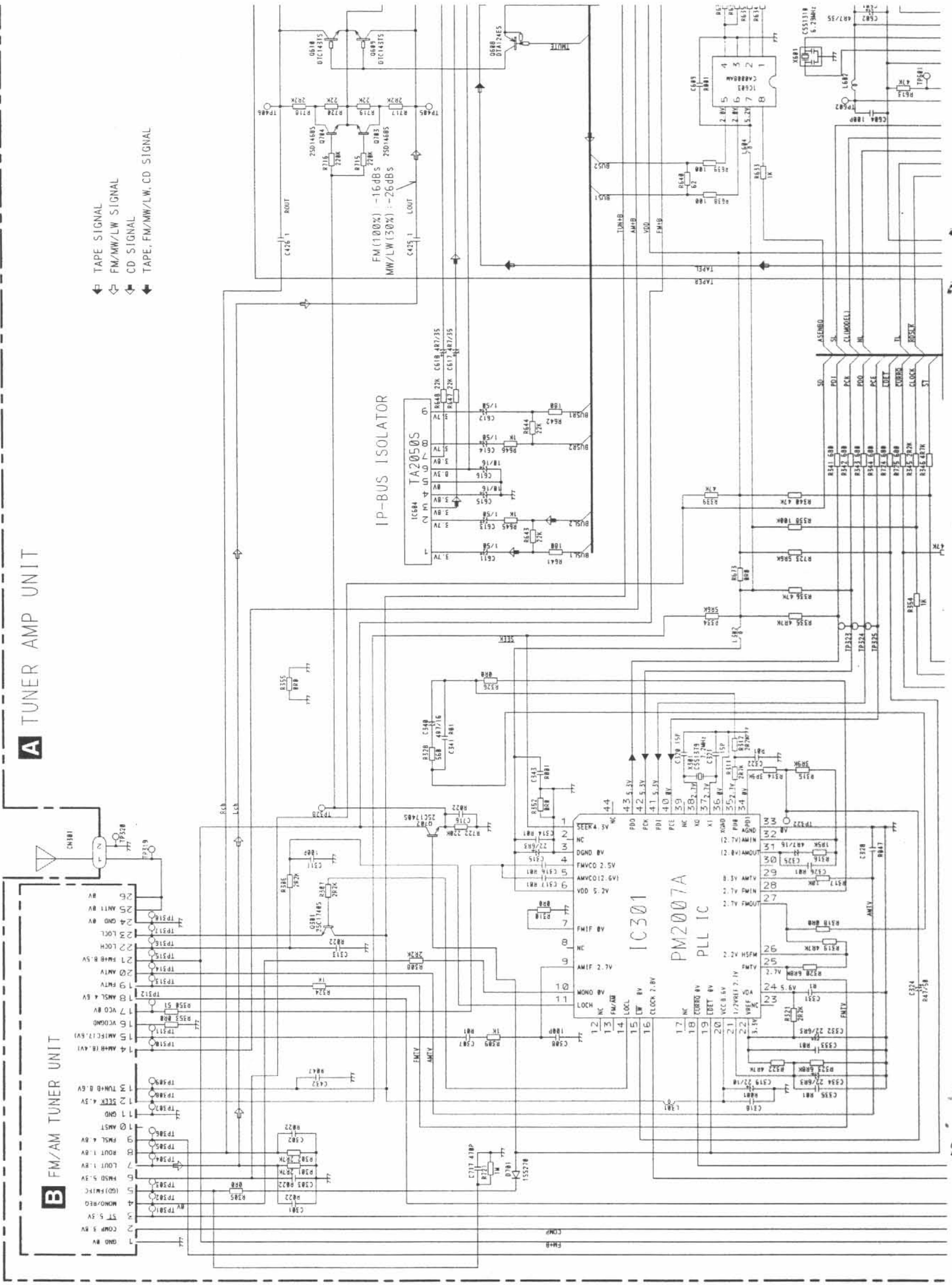


A-a A-b

Fig. 5



A-a A-b



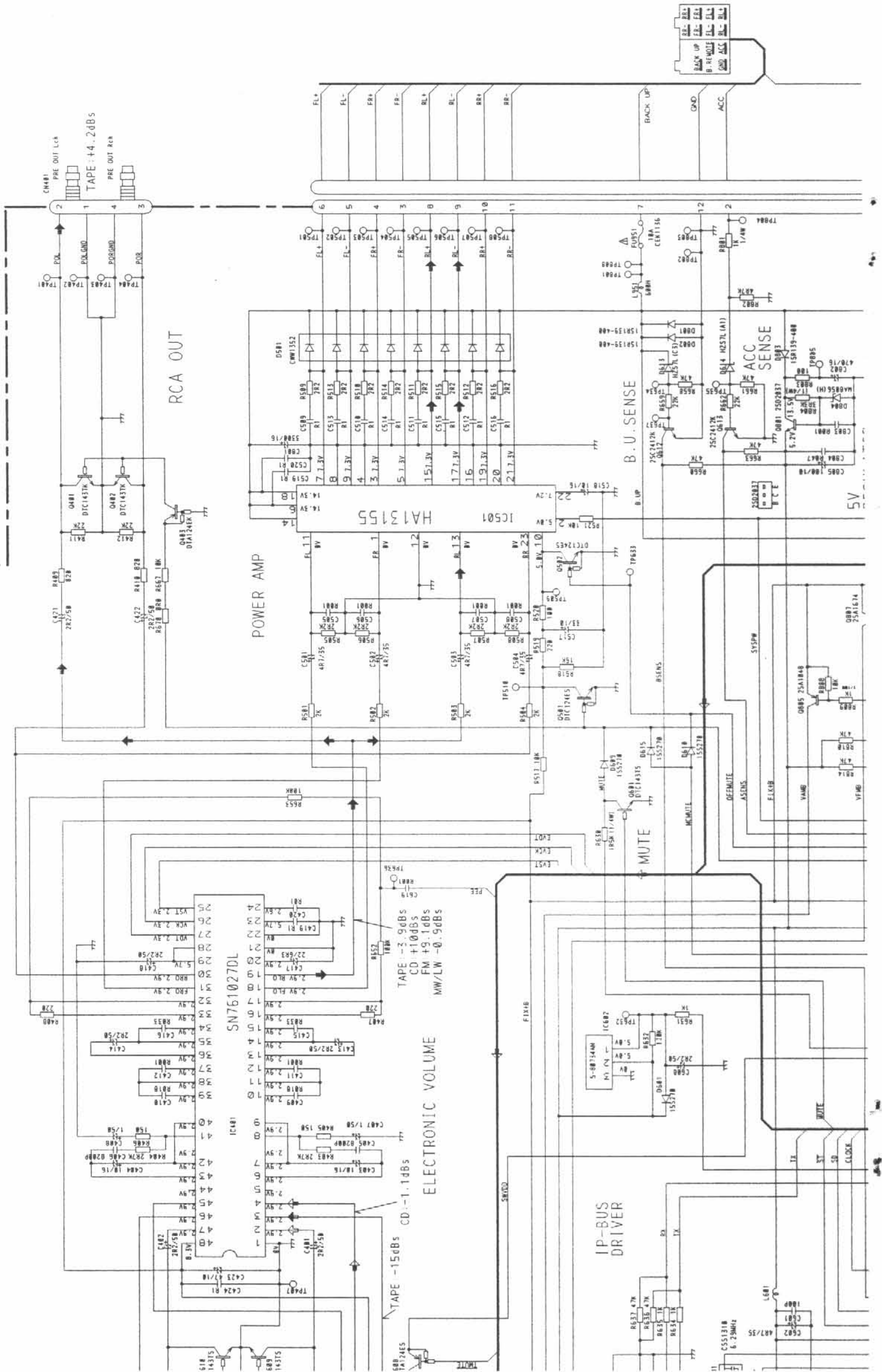


A-a A-b

NOTE:  
 □ Symbol indicates a resistor.  
 No differentiation is made between chip resistors and discrete resistors.  
 ⊖ Symbol indicates a capacitor.  
 No differentiation is made between chip capacitors and discrete capacitors.

Decimal points for resistor and capacitor fixed values are expressed as:  
 2.2-2R2  
 0.022-R022

The Δ mark found on some component parts indicates the importance of the safety factor of the part. Therefore, when replacing, be sure to use parts of identical designation.

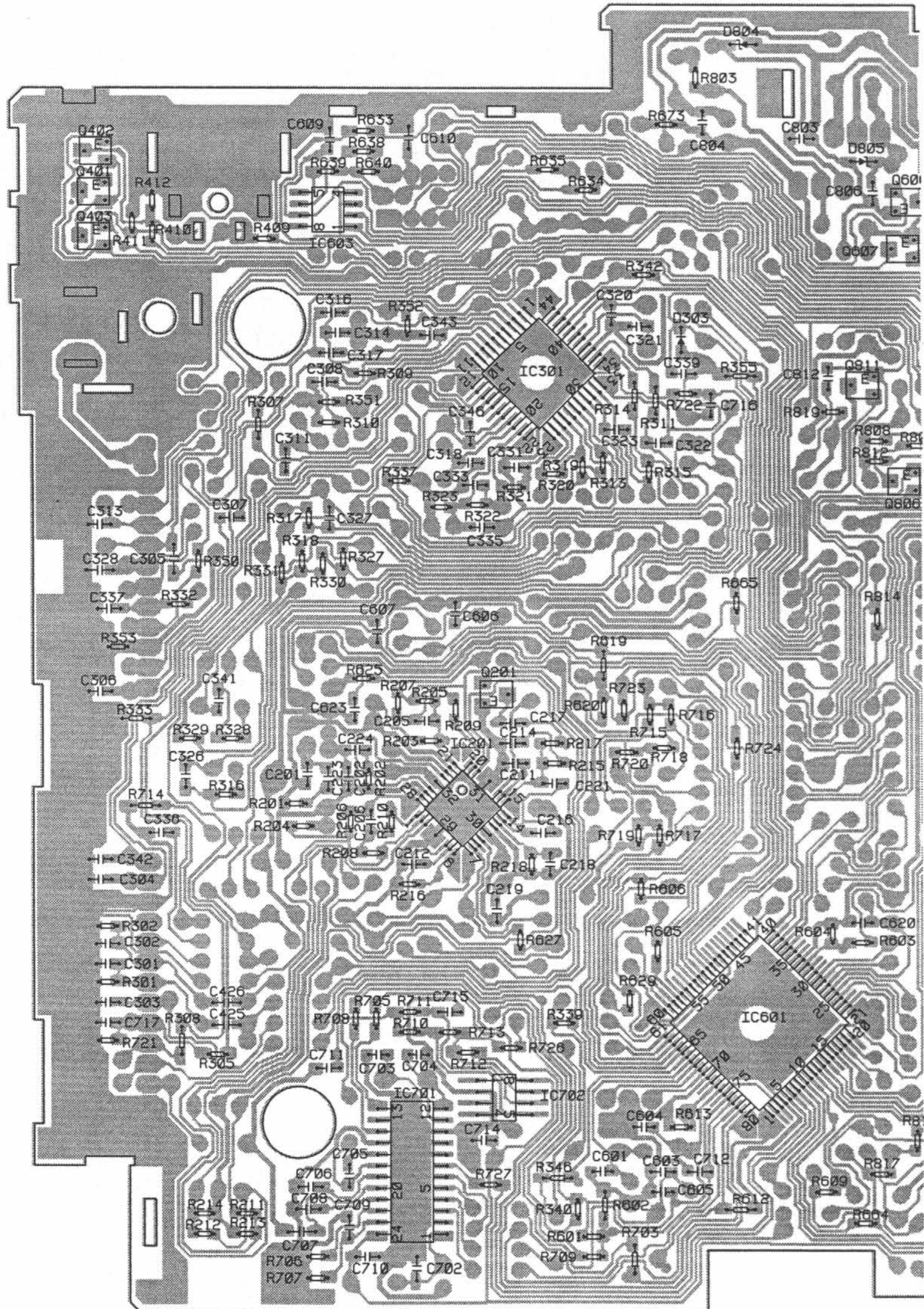




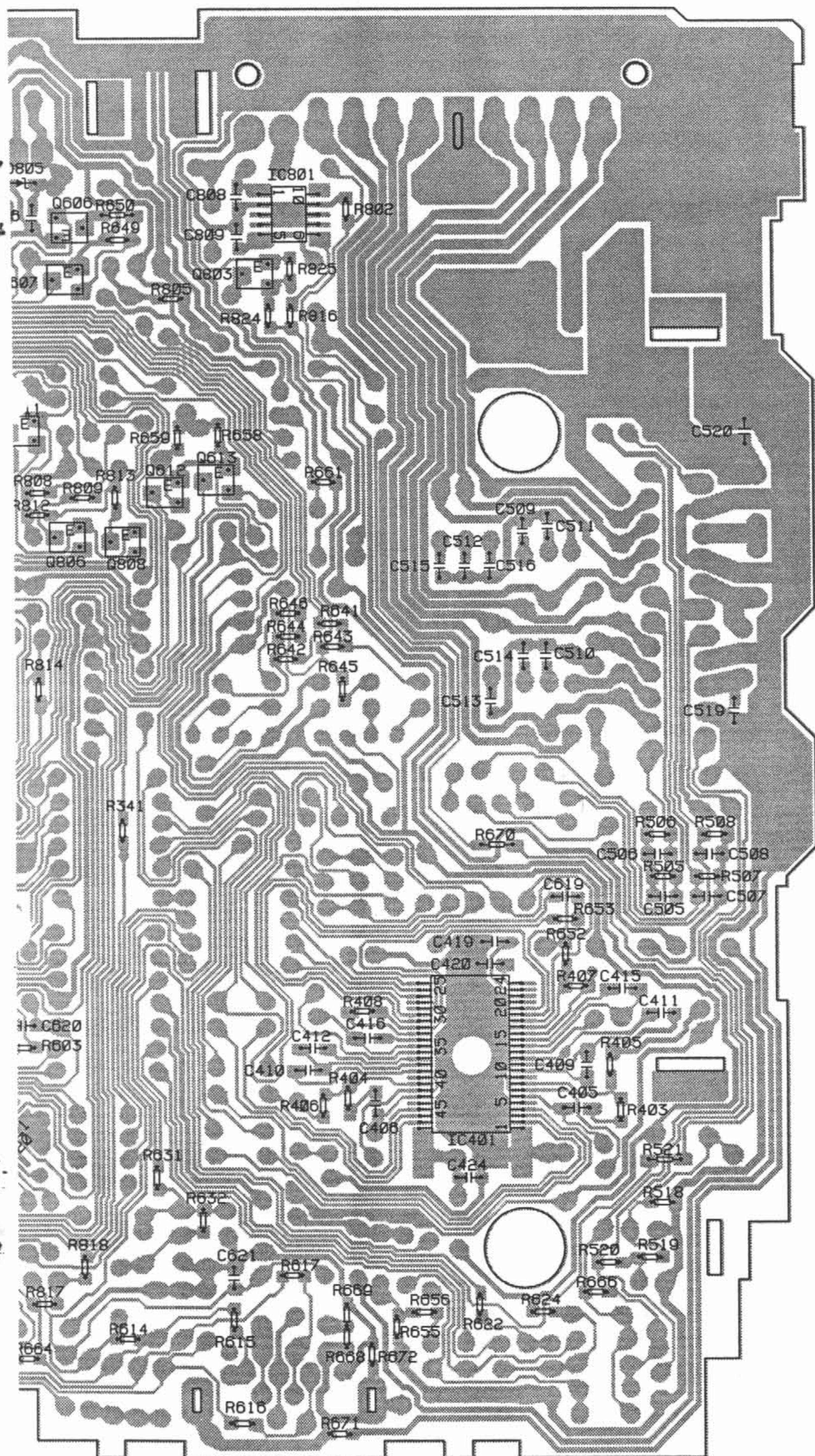




**A** TUNER AMP UNIT







IC, Q

SIDE B

Q402

Q401 Q606  
IC801  
Q403

Q607 Q803  
IC603

Q811  
IC301

Q613  
Q612

Q806  
Q808

Q201

IC201

IC401  
IC601

IC701  
IC702

Fig. 9



4.3 KEYBOARD UNIT

SIDE A

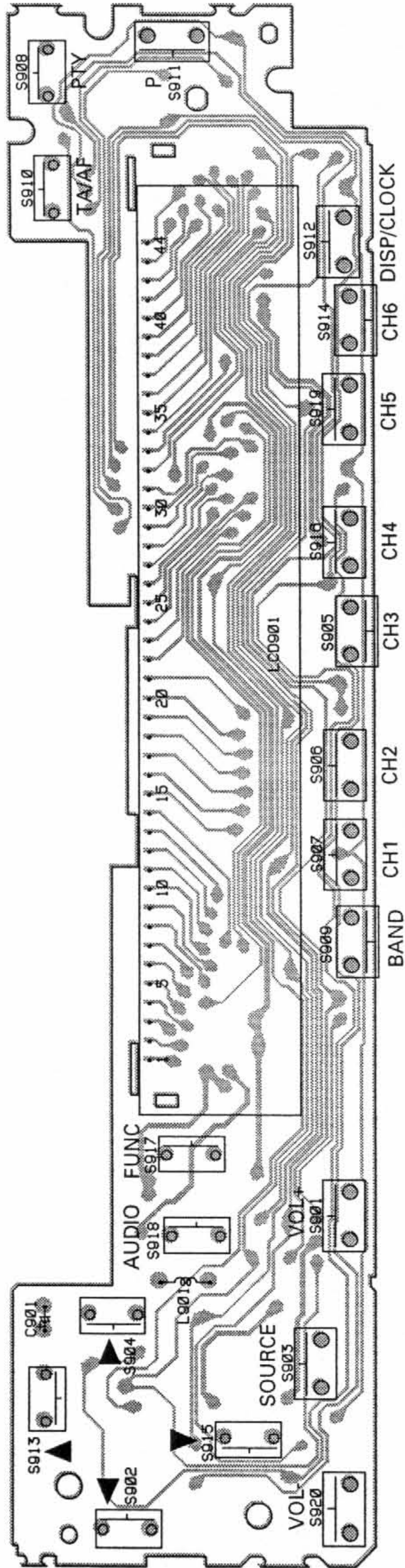


Fig. 12

IC900 SIDE B

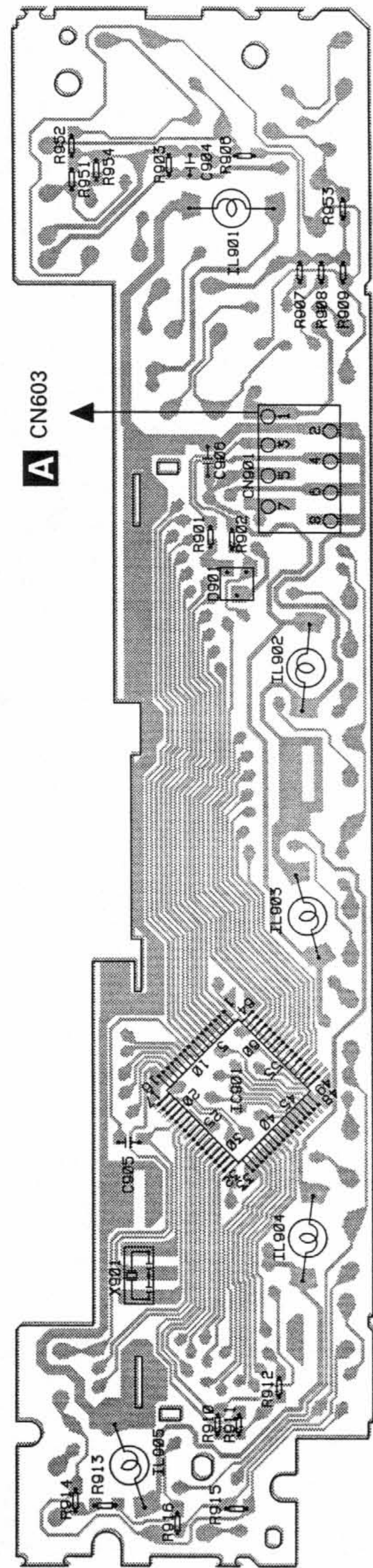


Fig. 13





2.2 CASSETTE MECHANISM ASSY

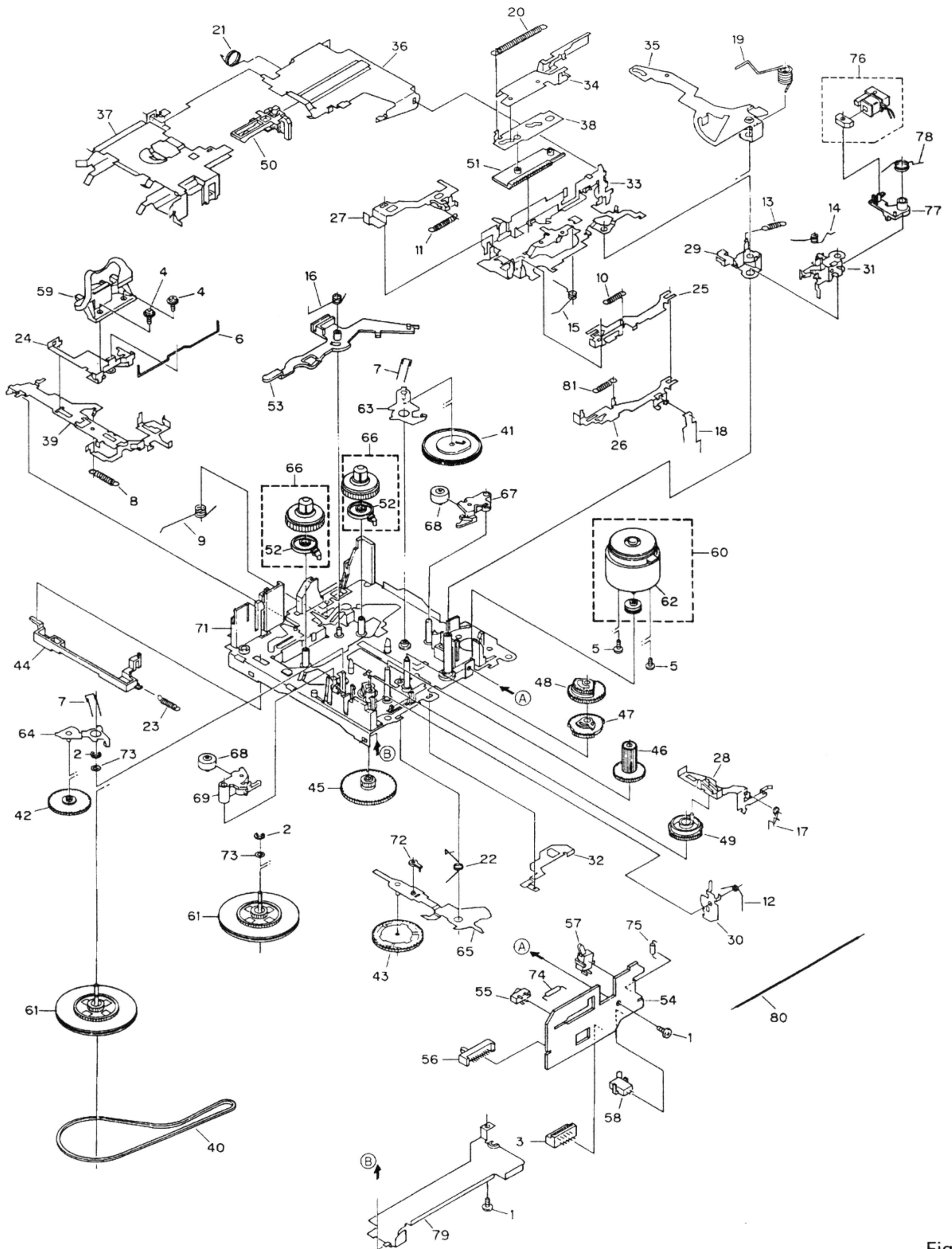


Fig. 3